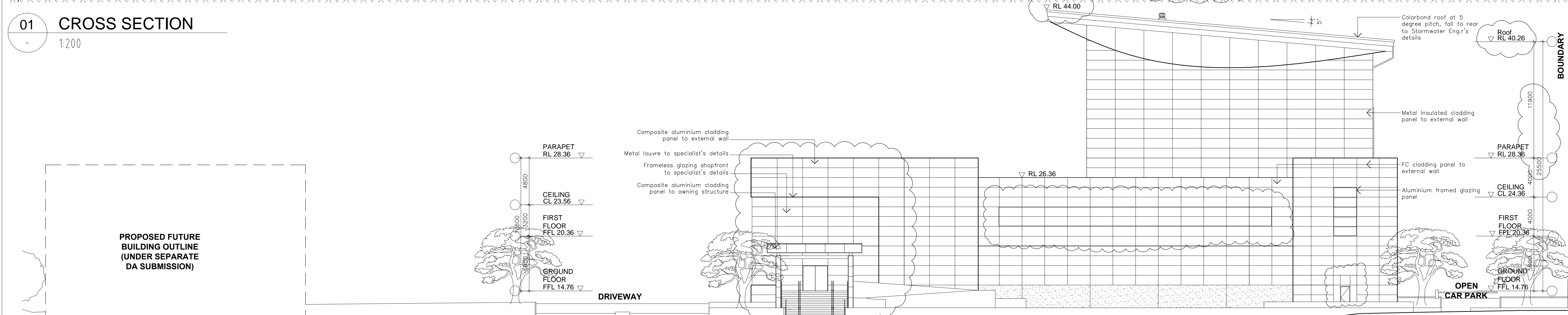


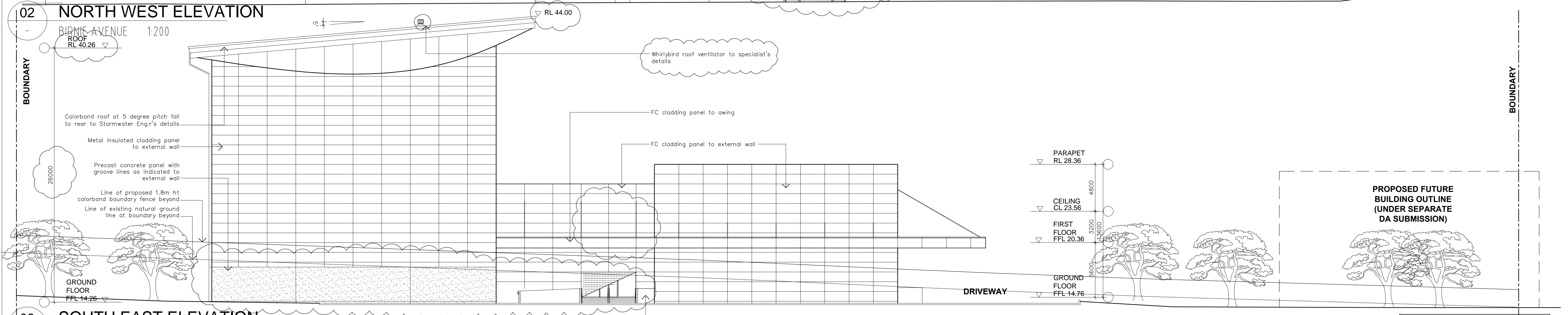
01 CROSS SECTION

1:200



02 NORTH WEST ELEVATION

1:200



03 SOUTH EAST ELEVATION

1:200

NOTES:
This drawing is subject to copyright and may not be copied, used or reproduced in any way without the authority of VT Architects P/L.

DO NOT SCALE DRAWINGS, VERIFY ALL DIMENSIONS ON SITE

Drawing title Abbreviations
SK - Sketch Design, TD - Tender Document,
DA - Development Application, DD - Detail Drawing,
CC - Construction Certificate, WD - Working Drawing.

Copyright VT ARCHITECTS PTY. LTD. 2011

Date	Amendment	Rev.
02.03.11	DA Submission	A
19.04.11	Issue for Coordination	B1
29.04.11	Issue for Review	B2
05.05.11	Issue for Review	B3
16.05.11	Amend layout as clouded	C
25.05.11	DA resubmission	D

Consultants:
Landscape Architects:
Ray Fuggle & Associates Pty Ltd
Suite 71, 48 George Street, Parramatta NSW 2150
Tel: (02) 9851 9222 Fax: (02) 9851 5844

Stormwater Engineer:
H&H Consulting Engineers Pty Ltd
Level 5, 79 Victoria Avenue
Cherrywood NSW 2167
Tel: (02) 9417 8400 Fax: (02) 9417 8337

Consultants:
Surveyor:
Whelans Insites Pty Ltd
Level 12, 80 Clarence Street
Sydney NSW 2000
Tel: (02) 8234 8300 Fax: (02) 9262 6511

Traffic Engineer:
Halcrow Pacific Pty Ltd
Suite 20, 809 Pacific Highway
Cherrywood NSW 2167
Tel: (02) 9410 4100 Fax: (02) 9410 4199

Client:
Golden Thinking Limited
Unit E2 & E3, 3-29 Birnie Avenue
Lidcombe NSW 2141

Architect:
VT ARCHITECTS PTY LTD
PO Box 8, Regents Park BC,
NSW 2143 AUSTRALIA
26 Bolivia Street,
Cabramatta, NSW 2166
T: (02) 9723 0999
F: (02) 9723 0990
E: info@vtarchitects.com.au
A.B.N. 24 083 968 163
Norm. Architect: Vinh Trang 6275
Website: www.vtarchitects.com.au

Project:
**PROPOSED CONSTRUCTION OF AN
AUTOMATED WAREHOUSE WITH ANCILLARY
OFFICE AND CAR PARKING AREA AND
ASSOCIATED FIT-OUT WORKS FOR USE AS A
LOGISTICS WAREHOUSE AND DISTRIBUTION
FACILITY**
Lot 102 DP 1155104
No. 14 Parramatta Road
Lidcombe NSW 2141

Drawing Title:
SECTION AND ELEVATIONS

Date:	13.12.10	Drawn by:	QC	Scale:	1:200@A1 1:400@A3
Drawing No.:	735-DA-101	Rev.	D		